

# COBRA

MODEL: HM381

## COBRA LAWN MOWER OWNER'S MANUAL



**Cobra Garden Machinery**


Henton and Chattell Ltd., London Road, Nottingham NG2 3HW UK

[www.cobragarden.co.uk](http://www.cobragarden.co.uk)

## **WARNING:**

For your own safety please read this manual before attempting to operate your new unit. Failure to follow instructions can result in serious personal injury. Spend a few moments to familiarise yourself with your mower before each use.

### **1. GENERAL SAFETY RULES**

 **WARNING** When using petrol tools, basic safety precautions, including the following, should always be followed to reduce the risk of serious personal injury and/or damage to the unit. Read all these instruction before operating this product and retain these instructions for future reference.

#### **Training**

1. Before using the lawnmower read the instructions carefully. Familiarise yourself with the controls and pay particular attention in learning how to stop the machine in an emergency.
2. Never allow children or people unfamiliar with these instructions to use the lawn mower. Local regulations can restrict the age of the operator.
3. Never mow while people, especially children or pets are nearby.
4. Never use the mower if the operator is taking medicine or substances that could affect or impair his ability to react or concentrate.
5. Keep in mind that the operator or user is responsible for accidents or hazards occurring to other people or their property.

#### **Before you start**

1. While mowing, always wear substantial footwear and long trousers. Do not operate the equipment when barefoot or wearing open toed sandals.
2. Thoroughly inspect the area where the equipment is to be used and remove all objects which can damage or be thrown by the machine. Stones and other objects may be projected from the blade. Avoid mowing foreign objects as they may damage the mower and present a hazard to the operator.
3. Before using, always visually inspect to see that the blade, blade bolts and cutter assembly are not worn or damaged. Replace worn or damaged blades and bolts in sets to preserve balance.

#### **Operation and Caution**

1. Mow only in daylight or in good artificial light.
2. Avoid operating the equipment in wet grass, where feasible.
3. Always be sure of your footing on slopes. Mow across slopes rather than up and down. Take particular care on slopes and when changing direction.
4. Walk, never run with the mower.
5. Do not mow excessively steep slopes of more than 20°
6. Use extreme caution when reversing or pulling the lawn mower towards you.
7. Never operate the lawn mower with defective guards, or without safety devices, for example deflectors in place.
8. Keep your feet and hands well away from the blade in accordance with the instructions.
9. Never put hands or feet near or under any rotating parts. Keep clear of the discharge opening at all times.
10. If the mower strikes a foreign object. Inspect the lawnmower for damage and make repairs before continuing to use the mower

#### **Maintenance and Storage**

1. Keep all nuts, bolts and screws tight to be sure the equipment is in safe working condition.
2. Check the grass catcher and deflector frequently for wear or deterioration.
3. Replace worn or damaged parts for safety. Genuine parts should always be used as parts of inferior quality can damage the equipment and compromise safety.
4. If the blade needs to be removed or adjusted, wear strong gloves to prevent injury to hands and fingers. Take care not

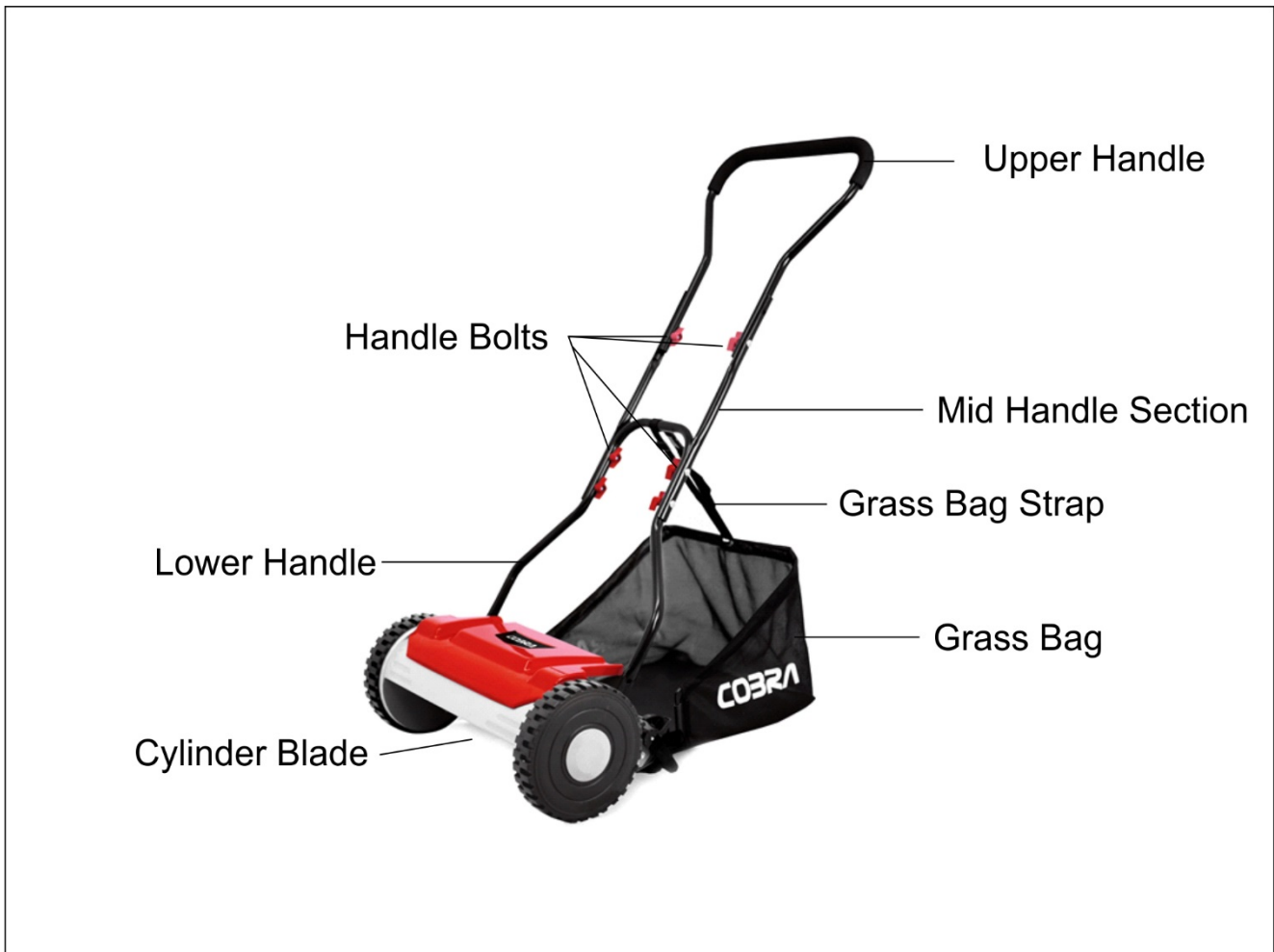
- to trap your fingers in the blades of the mower whilst making adjustments.
- 5. Carefully clean the mower and grass bag after use to remove debris as this can damage and corrode.
- 6. Do not use harsh abrasive or caustic cleaners when cleaning the mower.
- 7. Store the mower in a dry secure location.

**Fertilisers and top dressings are particularly corrosive.**

In time your chassis may peel because of the abrasive action of the debris making contact. This can be remedied by touching up paintwork where necessary to prevent corrosion.

**Warning: Do not touch the blade.**

**2. PARTS DESCRIPTION**

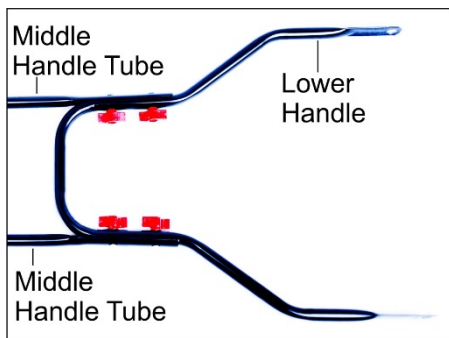
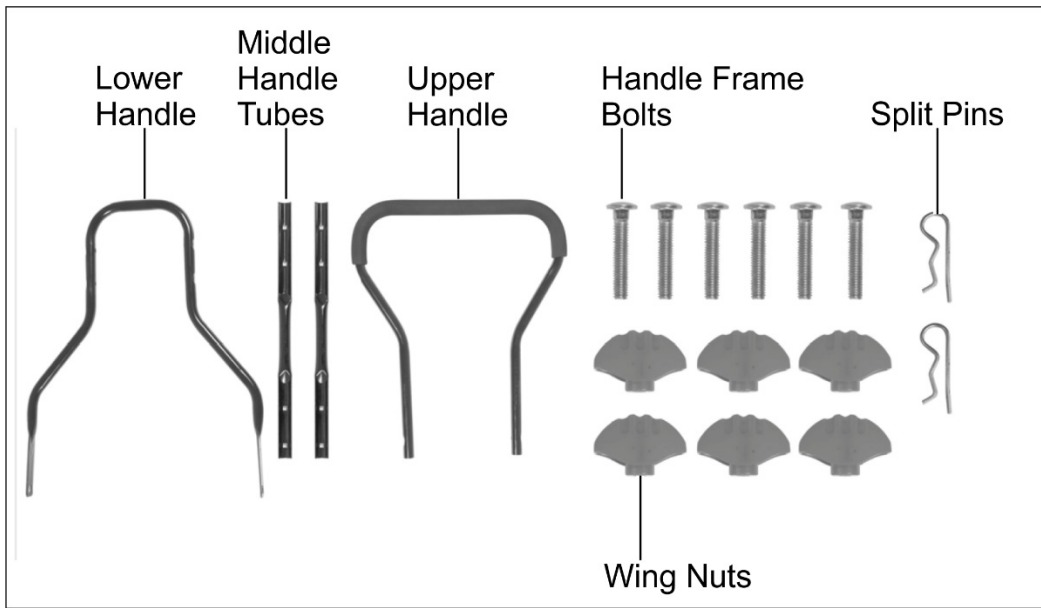


**3. TECHNICAL DATA**

Model	HM381
Cutting width	38 cm
Height of Cut	13, 23, 32 and 38 mm
Net Weight	9 kg

## 4. ASSEMBLY

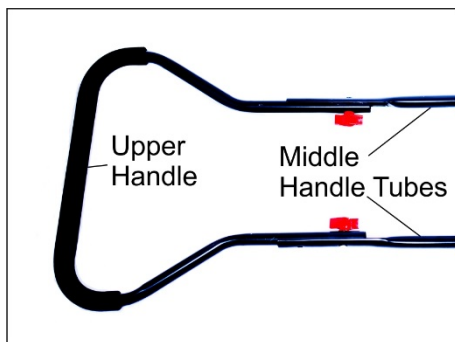
The handle assembly is constructed in four parts. An upper handle frame, two middle handle tubes and a lower handle frame.



### Lower Handle Assembly

The assembly requires the two middle tube sections to be bolted to the lower and upper handle frames. Firstly, place and align the middle tube to the lower handle on one side, as shown in the opposite picture. With the bolts and wing nuts locate and secure the tubes. Repeat the process for the other side.

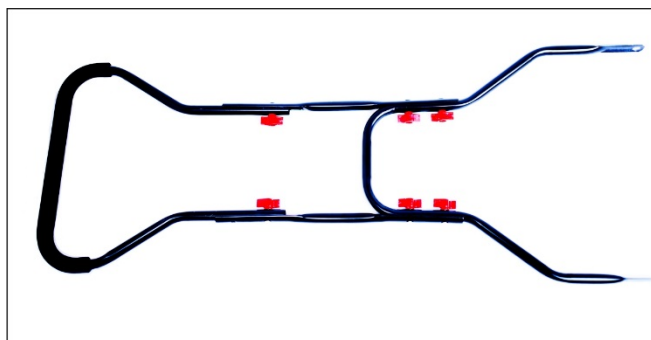
Ensure the bolts are tight and the bracket is held securely.



### Upper Handle Assembly

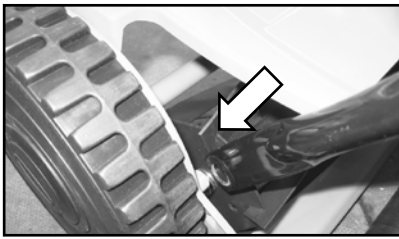
Take the upper handle frame and align with the middle tubes previously fitted.

With the bolts and wing nuts secure the upper handle to the two middle tubes, as shown opposite. Tighten the wing nuts to ensure the upper handle is secure and rigid.



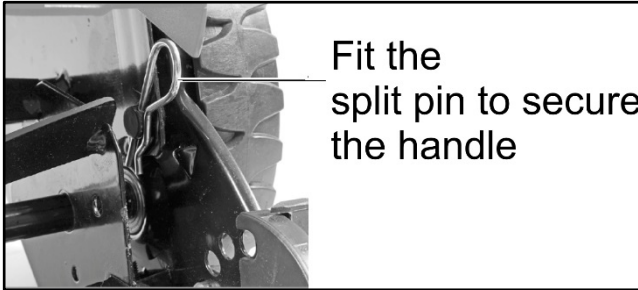
### The Completed Handle Assembly

The completed handle assembly should appear as shown opposite, with each element securely and rigidly located.



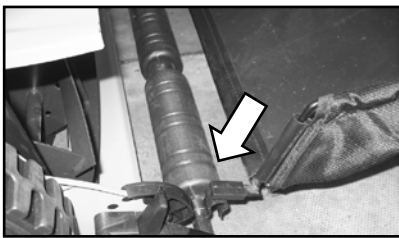
### **Fitting the Handles to the Mower Body**

Align the large holes at the bottom ends of the handle assembly with the lugs of the mower body as illustrated. Carefully squeeze the ends together and release over the lugs of the mower.



### **Fit the Split Pin**

Fit the split pin to secure the handle frame to the mower, as shown.



### **Attaching the Grass Box**

Push the clips of the grass box onto the roller assembly as shown in the picture.

Attach the grass box strap through the loop on the box and onto the handle assembly, adjust the length as required.



### **Adjusting the Height of Cut**

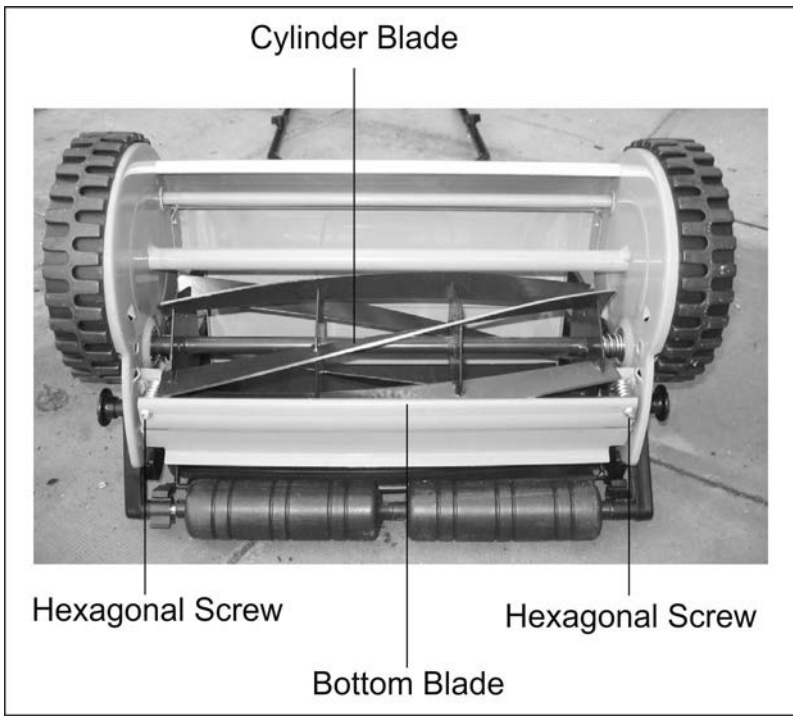
The hand mower has 4 heights of cut. To change the height; of pull out the height of cut adjustment knob indicated in the illustration. Rotate the position of the mower roller to the required height. Repeat for the other side of the mower. Always set each side to the same height.

## **5. Operating the Mower**

1. Set the height of cut appropriately for the condition of the lawn. Where the grass is long or wet, then ensure the height of cut is high initially. Reset the height of cut to the required height after first mowing the long grass.
2. For the best results only cut dry grass and cut regularly when the grass is growing quickly.
3. Mow in parallel lines with a small overlap.

## **6. Adjustment / Maintenance of the Cutting Blades**

The blade system has a cylinder blade which rotates within the mower housing against the bottom blade. The cutting action is similar to a pair of scissors and when adjusted correctly will provide ideally a clean cut of each leaf of grass. Take care to avoid contact with the sharp blades whilst undertaking the adjustment.



1. The hexagonal screws on the bottom blade assembly allow the distance from the cylinder and the bottom blade to be adjusted.

2. Turn the hexagonal screw clockwise moves the bottom blade closer to the cylinder. Reversely, anti-clockwise moves the blade from the cylinder.

3. Adjust the setting so that the blades are just touching. When they are too close mowing will be difficult and noisy. Adjust so that the blades rotate easily, but are still in contact and cutting, rather than ripping the grass.

4. Periodically check the blade adjustment.

## 7. TROUBLESHOOTING

PROBLEM	PROBABLE CAUSE	CORRECTIVE ACTION
The grass is not cut correctly.	A ragged cut may be caused by trying to cut too long grass.	Select a higher cut position. Cut more regularly
	Grass is ripped out rather than cleanly cut.	Adjust the blade and cylinder settings as shown above.
	The cylinder and bottom blade are blunt.	Replace or sharpen the blades by a Cobra dealer.
Excessive vibration and noise	Damaged cylinder or bottom blade	Replace the damaged blades.
	The bottom blade may be adjusted too closely to the cylinder	Adjust the blade and cylinder settings as shown above.

## **8. WARRANTY**

This product is warranted in accordance with legal regulations for a 24 month period effective from the date of purchase by the first user.

This product will not be covered if used in a commercial application.

This warranty covers all material or production failures, it does not include: defects from normal wear and tear, parts such as, bearings, brushes, cables, air cleaning elements, brake pad, clutch disc, tyre, wheel, recoil starter rope, belts, cutter blades, plugs, lubricant oils and grease or accessories. Damage or defects resulting from abuse, accidents or alterations, natural fading of painted or plated surfaces, sheet peeling and other natural deterioration.

Any damage that occurs from the use of non-genuine Cobra parts will not be covered.

We reserve the right to reject any claim where the purchase cannot be verified or when it is clear that the product was not maintained properly. (Clean ventilation slots, carbon brushes and serviced regularly)

Expenses incidental to the warranty claim that are not covered;

-Compensation for loss of time, commercial loss or rental costs of substitute product.

-Costs incurred for transportation to and from the dealership.

Any damage that occurs from the following will not be covered; exposure of the product to smoke and soot, chemical agents, bird droppings or other animal waste, seawater, sea breeze, salt or other environmental phenomena.

Any damage resulting from operating methods other than those indicated in the owner's manual will not be covered.

Your purchase receipt must be kept as proof for date of purchase. Your un-dismantled mower must be returned to your dealer in an acceptably clean state, accompanied by your proof of purchase.

### **Please Register Your Mower**

If your dealer did not collect registration information from you, please take a few minutes and register your purchase with Cobra.

You can register by completing and mailing the registration card that should be in the box or by going online to: [www.cobragarden.co.uk](http://www.cobragarden.co.uk) and clicking on Product Registration.

Before using the lawn mower, all mower operators must read this manual

## **9. ENVIRONMENT**

Should your machine need replacement after extended use, do not put it in the domestic waste but dispose of it in an environmentally safe way.