



SERVICE DATA

BATTERY POWER BLOWER

ECHO: DPB-2600

(Serial number : U71335000001 - U71335999999)

INTRODUCTION

We are constantly working on technical improvement of our products. For this reason, technical data, equipment and design are subject to change without notice. All specifications and directions in this SERVICE DATA are based on the latest product information available at the time of publication.

CONTENTS

| | |
|---------------------------------------------------------|---|
| 1 SERVICE INFORMATION..... | 2 |
| 1-1 Specifications | 2 |
| 1-2 Technical data | 2 |
| 1-3 Special tool..... | 3 |
| 1-4 Torque limits and Special maintenance materials ... | 4 |

Reference No. 25-09A-00
ISSUED : 202301



1 SERVICE INFORMATION**1-1 Specifications**

| | | | |
|-----------------|-----------------------------------|--------------|-------------------------------------------------------------------------------------------------------|
| Dimensions* | Length | mm(in) | 344 (13.5) |
| | Width | mm(in) | 173 (6.8) |
| | Height | mm(in) | 327 (12.9) |
| Weight* | | kg(lb) | 2.0 (4.4) |
| Motor | Type | | Brushless DC motor |
| | Rotation | | Clockwise as viewed from the output end |
| | Rated current | A | 21.8 |
| | Rated voltage | V | 50.4 |
| | Rated output | kW | 0.9 |
| Battery | Standard battery | | LBP-560-100 / LBP-560-200 LBP-50-150 / LBP-50-250 |
| | Rated voltage | V | 50.4 |
| | Capacity | Ah / Wh | LBP-560-100: 1.82 / 92 LBP-560-200: 3.66 / 185 LBP-50-150: 2.25 / 113 LBP-50-250: 4.50 / 226 |
| | Weight | kg(lb) | LBP-560-100, LBP-50-150: 1.0 (2.2) LBP-560-200, LBP-50-250: 1.8 (4.0) |
| Battery charger | Standard charger | | LCJQ-560C |
| | Input voltage | V | AC220-240 |
| | Rated output | V | 58.1 |
| Throttle | Type | | Trigger with cruise control |
| Blower | Fan type | | Centrifugal |
| | Max. air volume (with pipes) | m3/min (cfm) | STD: 11.6 (410) Boost: 13.3 (469) |
| | Max. air velocity (with pipes) | m/s (mph) | STD: 69.7 (156) Boost: 79.5 (178) |
| | Discharge ID | mm (in) | 65.5 (2.6) |

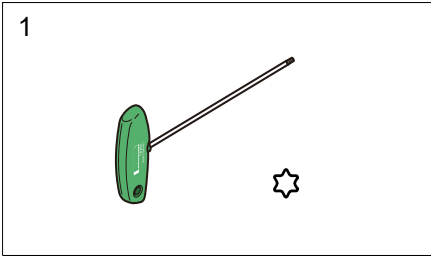
* Without blower pipes and battery

1-2 Technical data

| Motor | Speed control | | Variable |
|---------|----------------------------|------|--------------------------------------------------------------------------------------------------------------------------------|
| Battery | Charging time | min. | LBP-560-100: 22(80%) 33(100%) LBP-560-200: 45(80%) 64(100%) LBP-50-150: 30(80%) 47(100%) LBP-50-250: 60(80%) 89(100%) |
| | Operating time/one charge* | min. | LBP-560-100: 7 LBP-560-200: 14 LBP-50-150: 8 LBP-50-250: 20 |

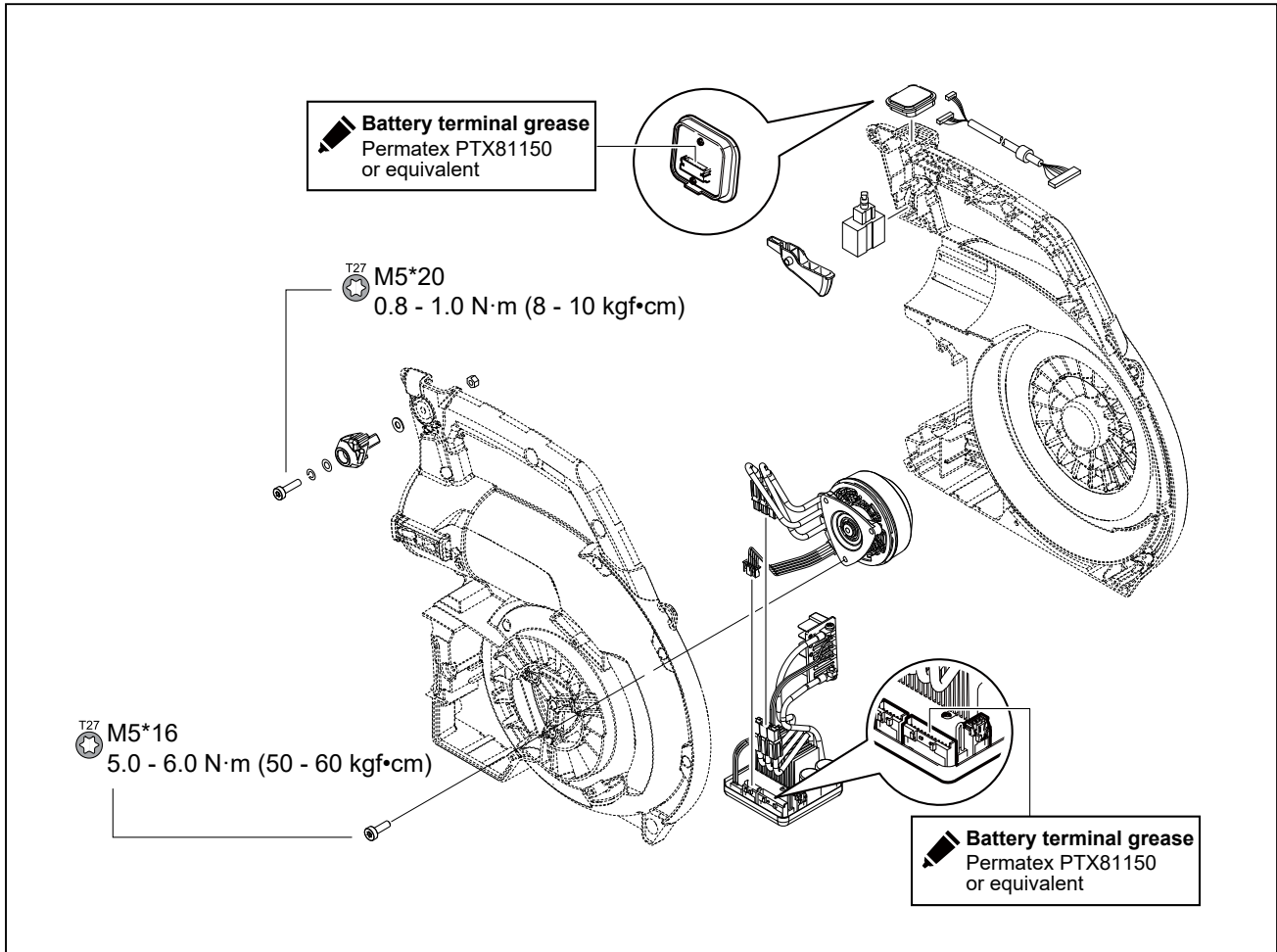
* It varies according to work.

1-3 Special tool



| Key | Part Number | Description | Reference |
|-----|-------------|-------------------|------------------------------------|
| 1 | X602-000340 | Torx wrench (T27) | Removing and installing torx bolts |

1-4 Torque limits and Special maintenance materials



1-4 Torque limits and Special maintenance materials (Continued)

