

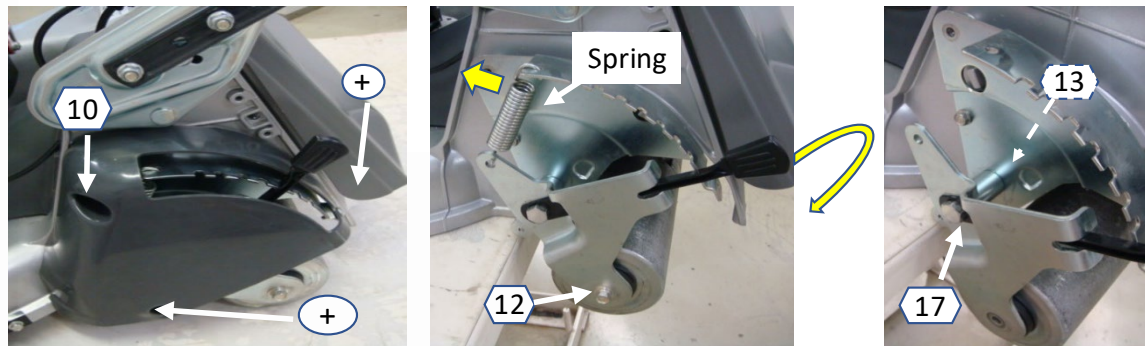
LAWNFLITE PRO

New 553HRS-PROHSDU

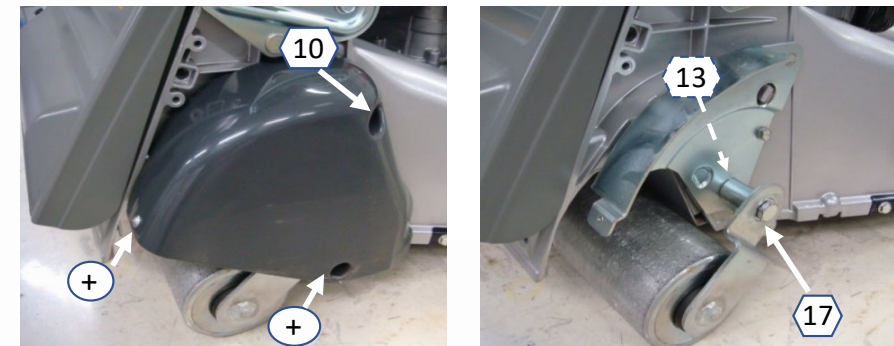
This new Model has some major roller Improvements to help improve its performance in challenging conditions!

Current roller type structure

< Left side > (Number of drawing is tooling size and type)



< Right side >



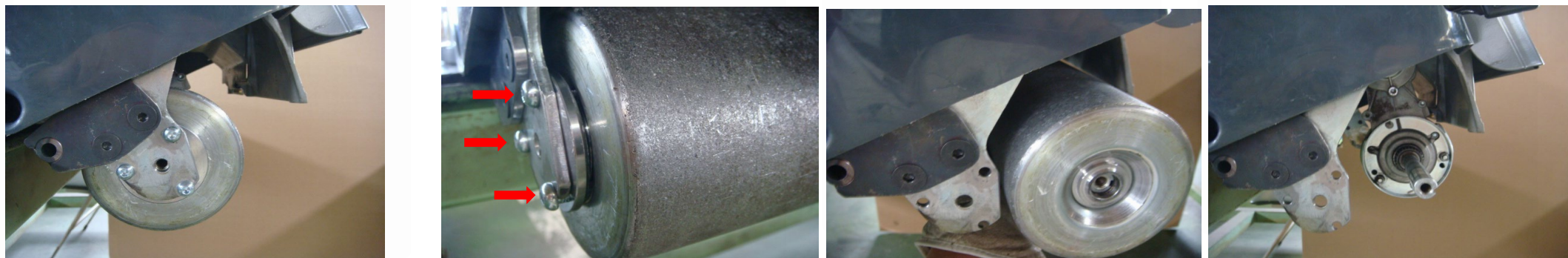
Left & right : Dismount the cover.

Left : Change the roller to lowest position then dismount the spring.

Left & right : Dismount the adjuster and roller.

Improvement of maintainability

The rollers can be removed by removing **only 3 bolts**.(Left and Right side)



* It is unnecessary to dismount the cover and spring.

【Comparison of roller structure】

	Parts of roller	Inside of roller (Transmission side)	Outside of roller	Roller axis
C u r r e n t				
I m p r o v e m e n t		<p>Improvement of handleability now has ratchet Bearings</p> <p>Protection from water and mud ingress</p>	<p>Improvement of maintainability</p>	

New 553HRS-PROHSDU

- The new units have many changes to the roller set-up, to help improve the performance of the roller drive in wet / muddy conditions!
- The changes are to the seals & rollers etc which will help to reduce the effect of water & wormcasts reaching the internal components!
- Also additionally to the parts above, these units have ratchet bearings in the roller which makes it far easier for turning!
- The other benefits, are that even though you have these extra components, the roller assembly is now much easier to strip for maintenance!
- We have done a lot of testing with these units and are very pleased with the improvements.